

High Power Lithium-Ion Cell

LR1865 BI

1. Scope

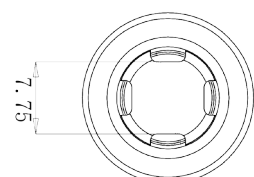
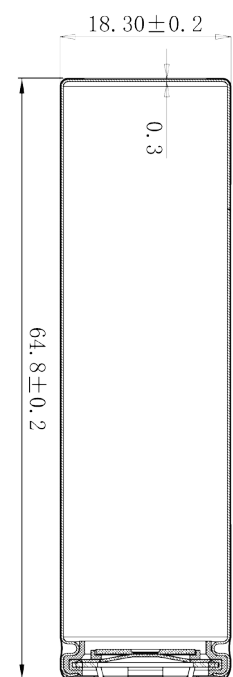
LISHEN Cylindrical Cells are 100% automatically manufactured and produced under the strict quality control and performance control to ensure long life, secure usage and very high performance. To be able to combine cells in systems, our products are automatically sorted under the strongest restrictions to optimise performance of cell blocks and systems as well as to reduce cost for electronic balancing systems.

2. Description and Model

LISHEN Cylindrical Cell LR1865 BI can be used in special applications where high charge and discharge request is stated, such as NBPC, LED Lamp, LEV, mobile charger.

3. Specifications

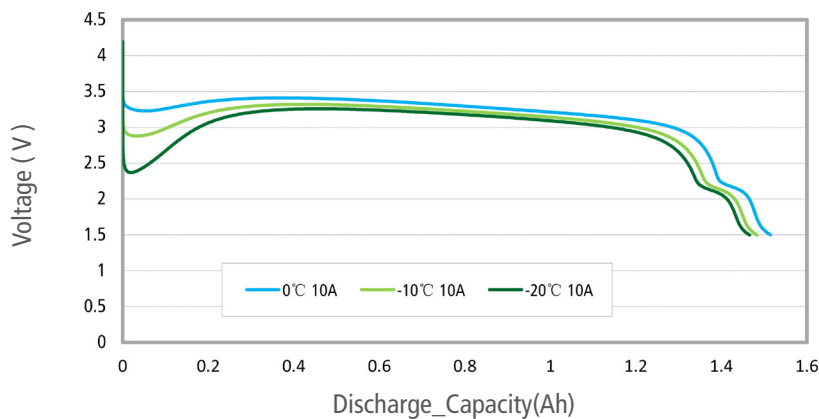
Item	Specification
Nominal Capacity	1.5 Ah
Nominal Voltage	3.6 V
AC-impedance	$\leq 17 \text{ m}\Omega$
charge	
- Standard Charge Method	CC/CV
- Current	1 C
- Voltage	4.2 V
- End Current	50 mA
- Maximum charge current	4 A
discharge	
- Standard Discharge Method	Constant Current (CC)
- Current	20 A
- End Voltage	2.5 V
- Maximum Discharge Current	30 A
Size	L: 65 mm, D: 18 mm
Cycle Life	20 A 300 th 80%
Weight	$40 \pm 2 \text{ g}$
Max Operating Temperature Range	$-20^\circ\text{C} \sim 60^\circ\text{C}$
Storage Temperature	$-20^\circ\text{C} \sim 45^\circ\text{C}$
Chemie	NMC



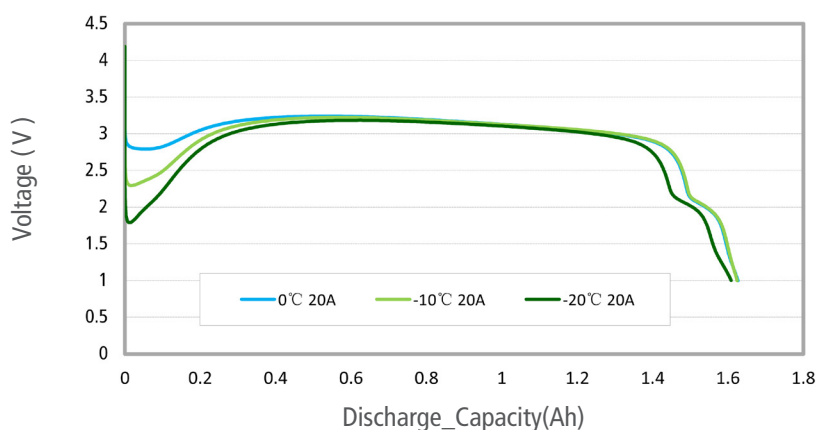
High Power Lithium-Ion Cell

LR1865 BI

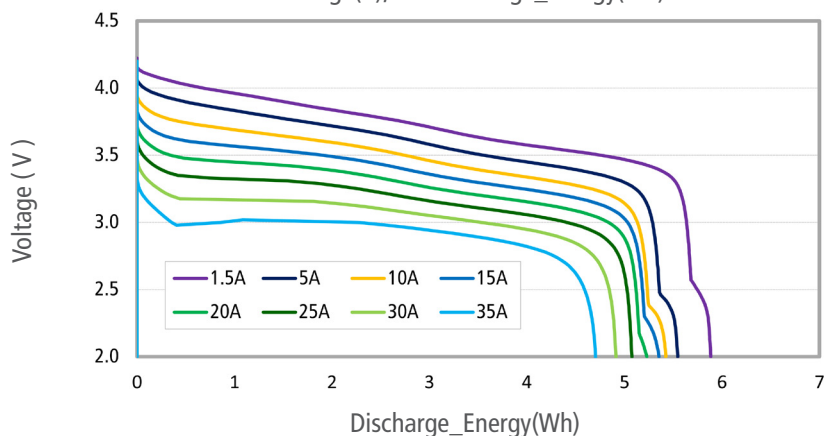
LR1865BI low temperature 10A discharge
Voltage(V), vs. Discharge_Capacity(Ah)



LR1865BI low temperature 20A discharge
Voltage(V), vs. Discharge_Capacity(Ah)



LR1865BI DT62 Rate
Voltage(V), vs. Discharge_Energy(Wh)



Applications

COMMERCIAL SOLUTIONS

- UPS Datacenter
- Telecom and IT backup
- Industrial material handling equipment

GOVERNMENT SOLUTIONS

- Military vehicles
- Military power grids
- GRID SOLUTIONS
- Frequency regulation
- Renewables storage integration
- Reserve capacity

TRANSPORTATION SOLUTIONS

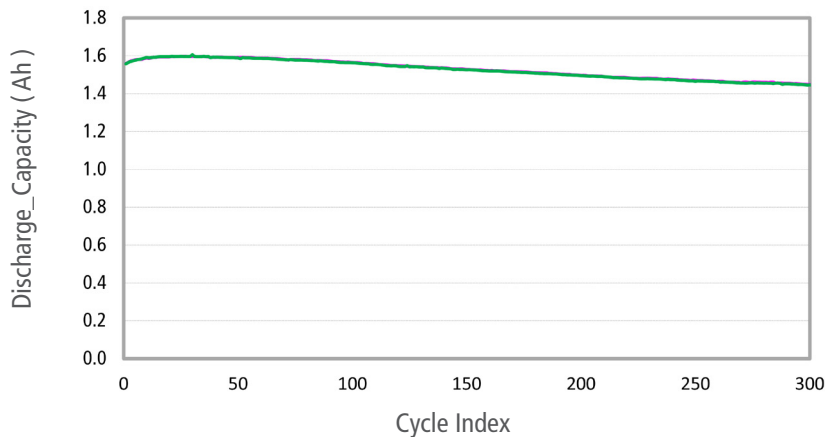
Hybrid, plug-in hybrid and electric vehicle battery systems for:

- Commercial vehicles
- Off-highway vehicles
- Passenger vehicles

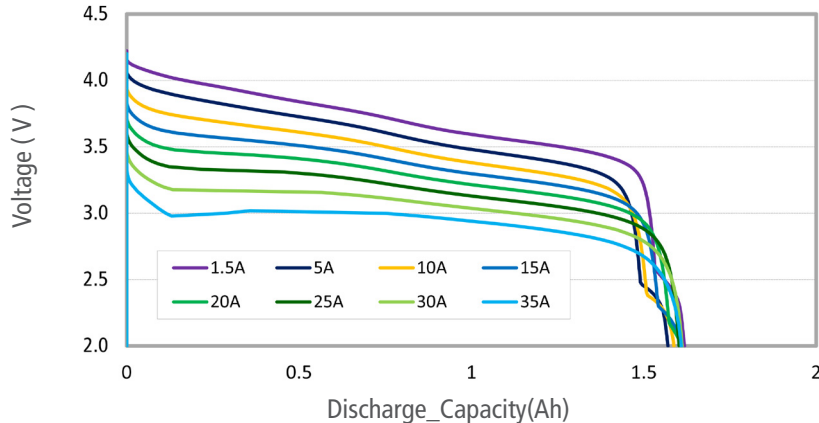
High Power Lithium-Ion Cell

LR1865 BI

LR1865BI 4A20A Cycle Life-Capcity



LR1865BI Rate
Voltage(V), vs. Discharge_Capacity(Ah)



Applications

COMMERCIAL SOLUTIONS

- UPS Datacenter
- Telecom and IT backup
- Industrial material handling equipment

GOVERNMENT SOLUTIONS

- Military vehicles
- Military power grids
- GRID SOLUTIONS
- Frequency regulation
- Renewables storage integration
- Reserve capacity

TRANSPORTATION SOLUTIONS

Hybrid, plug-in hybrid and electric vehicle battery systems for:

- Commercial vehicles
- Off-highway vehicles
- Passenger vehicles

This document represents typical data. Performance may vary depending on use conditions and application.

AX Power Solution GmbH makes no warranty explicit or implied with this data sheet. Contents subject to change without notice.

AX Power Solution GmbH

Hanauer Landstraße 291 A
D-60314 Frankfurt / Main

Tel: 069 - 3660 5813
Fax: 069 - 2729 2921

