

High Power Lithium-Ion Cell

LP44147272-130 Ah

1. Scope

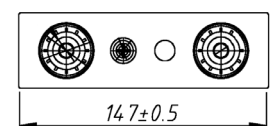
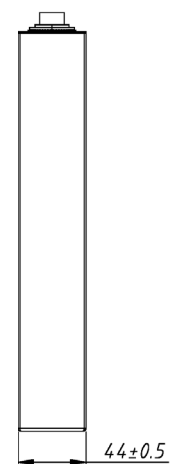
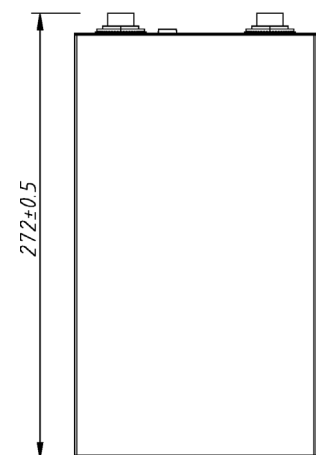
LISHEN High Power Cells are 100% automatically manufactured and produced under the strict quality control to ensure long life, secure usage and very high performance. To be able to combine cells in systems, our products are automatically sorted under the strongest restrictions to optimise performance of cell blocks and systems as well as to reduce cost for electronic balancing systems.

2. Application

LISHEN High Power Cells find their applications in all kind of mobile transport application, such as fork lifts, e-scooters, e-cars, e-busses as well as storage applications for small and high volume storage systems.

3. Specifications

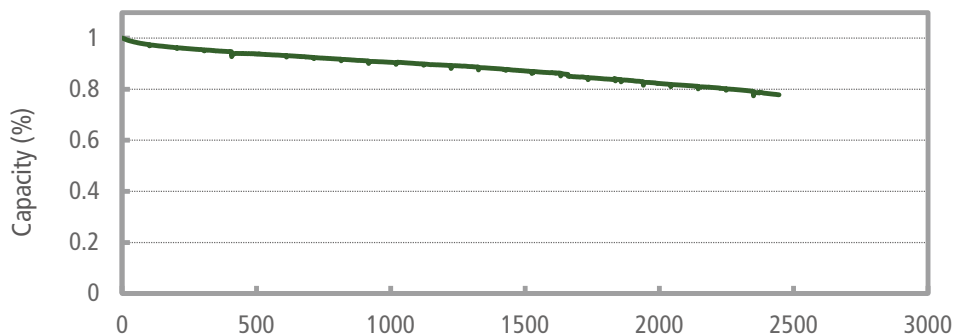
Item	Specification
Nominal Capacity	130 Ah
Average working Voltage	3.2 V
AC-Impedance	$\leq 1 \text{ m}\Omega$
charge	
- Standard Charge Method	CC/CV
- Current	1/3 C
- Voltage	3.65 V
- End Current	6.5 A
- Maximum Charge Current	1 C, 2 C (10 s)
discharge	
- Standard Discharge Method	Constant Current (CC)
- Current	1 C
- End Voltage	2.0 V
- Maximum Discharge Current	2 C, 4 C (30 s)
Size	44 mm x 147 mm x 272 mm
Cycle life	2.000 cycles at 80% DoD 3.000 cycles at 70% DoD
Weight of Cell	$3.500 \pm 100 \text{ g}$
Max Operating Temperature Range	$-20^\circ\text{C} \sim +60^\circ\text{C}$
Storage Temperature	$-40^\circ\text{C} \sim +45^\circ\text{C}$



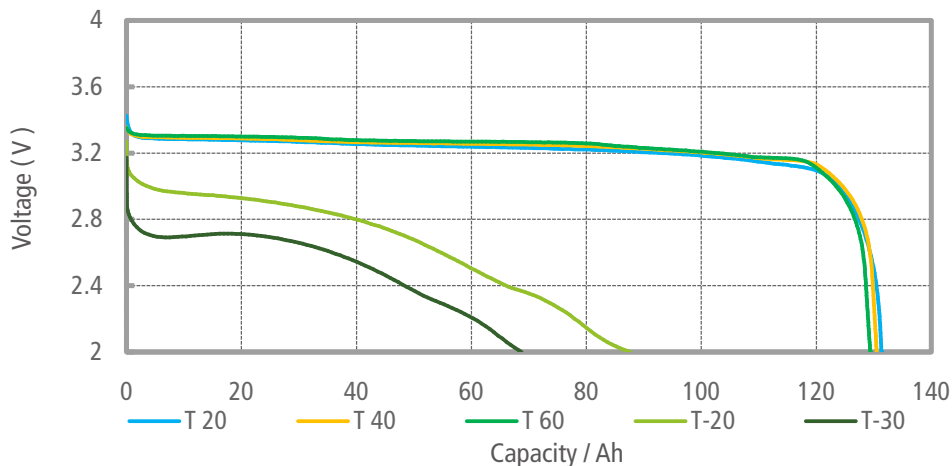
High Power Lithium-Ion Cell

LP44147272-130 Ah

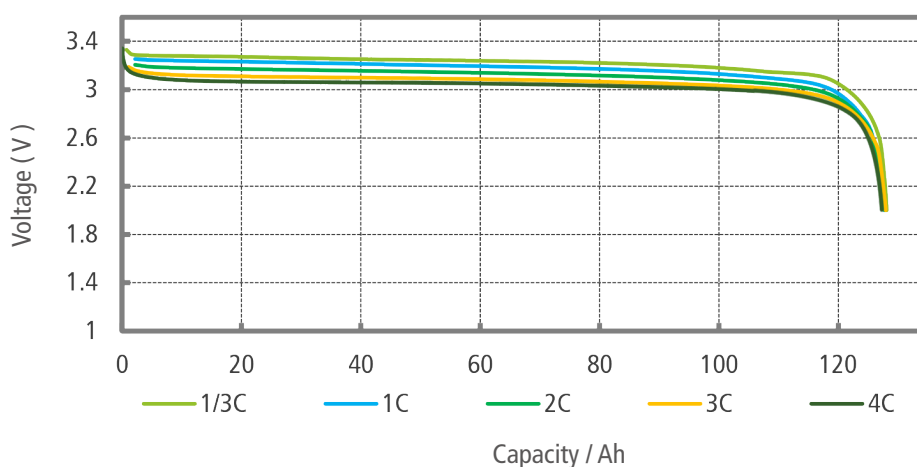
Cycle life at 1C charge/discharge, 25°C



Discharge curve at different temperatur



Discharge curve at different current



Applications

COMMERCIAL SOLUTIONS

- UPS Datacenter
- Telecom and IT backup
- Industrial material handling equipment

GOVERNMENT SOLUTIONS

- Military vehicles
- Military power grids
- GRID SOLUTIONS
- Frequency regulation
- Renewables storage integration
- Reserve capacity

TRANSPORTATION SOLUTIONS

Hybrid, plug-in hybrid and electric vehicle battery systems for:

- Commercial vehicles
- Off-highway vehicles
- Passenger vehicles

This document represents typical data. Performance may vary depending on use conditions and application.

AX Power Solution GmbH makes no warranty explicit or implied with this data sheet. Contents subject to change without notice.

AX Power Solution GmbH

Hanauer Landstraße 291 A
D-60314 Frankfurt am Main

Tel: 069 - 3660 5813
Fax: 069 - 2729 2921

